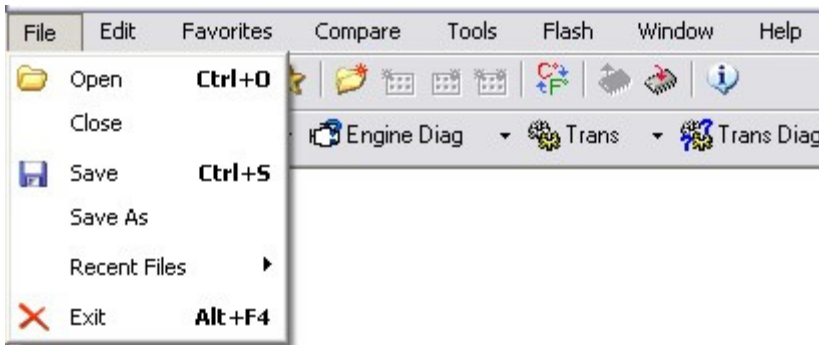




HPTUNERS EDITOR STARTUP GUIDE

Open up your editor & just scroll through your top tool bar to look over all of the features offered.

FILE



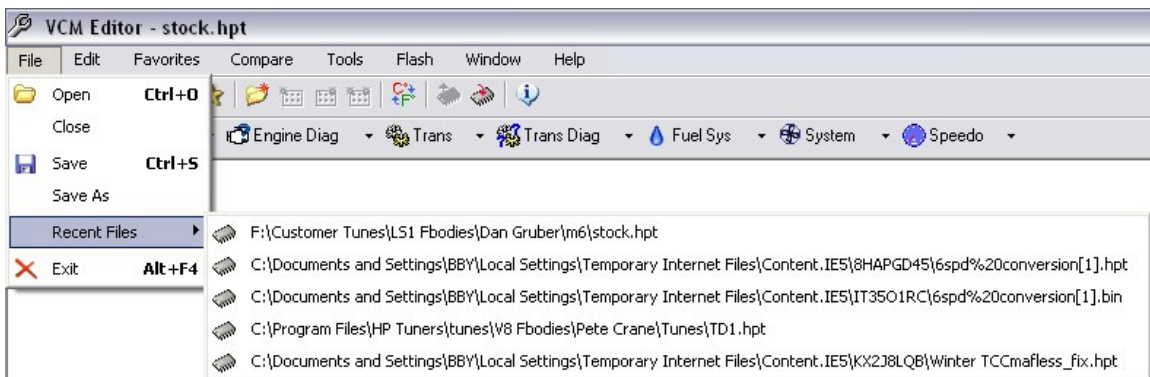
Open-Open an HPT or BIN File

Close-Close the current HPT or BIN File

Save-Saves over current file

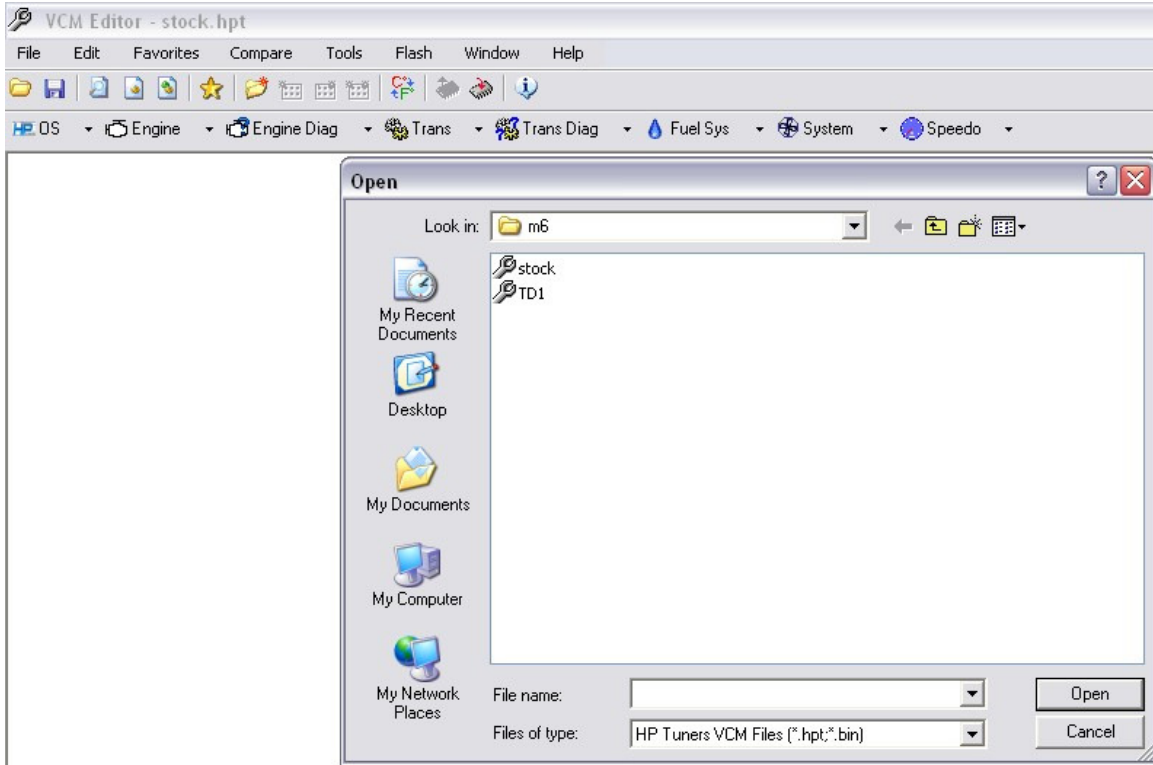
Save-As-Will Prompt you to save the file under a new name

Recent Files-Show's the last 5 files you've viewed for easy access



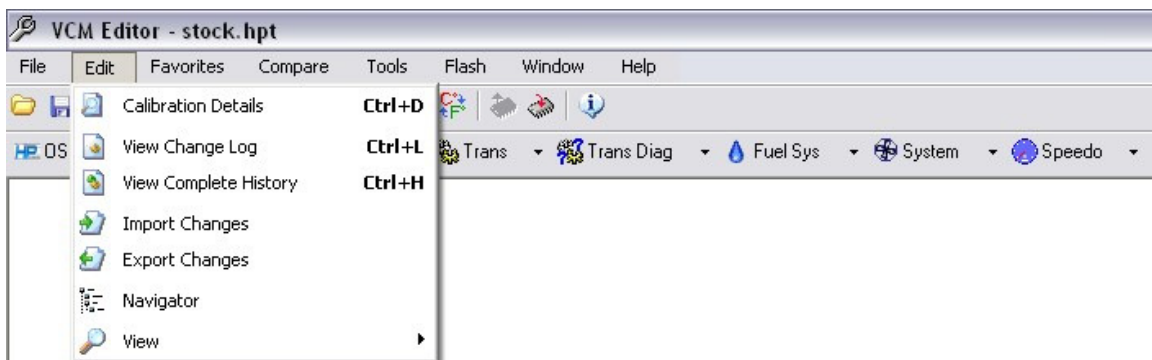
Also while pulling up the menus you'll notice the hot keys are displayed as well for quick access.

When you hit the open tab you'll be prompted to open a file



When you click the save tab it will save over top of whatever file your working on so be sure that's what you want to do. Normally you'll use the Save-As tab as this will create a new file.

EDIT



Calibration Details-Info about the current file

View Change Log-Shows all changes during this current session

View Complete History-Shows all changes made to this file since the beginning

Import Changes-non active

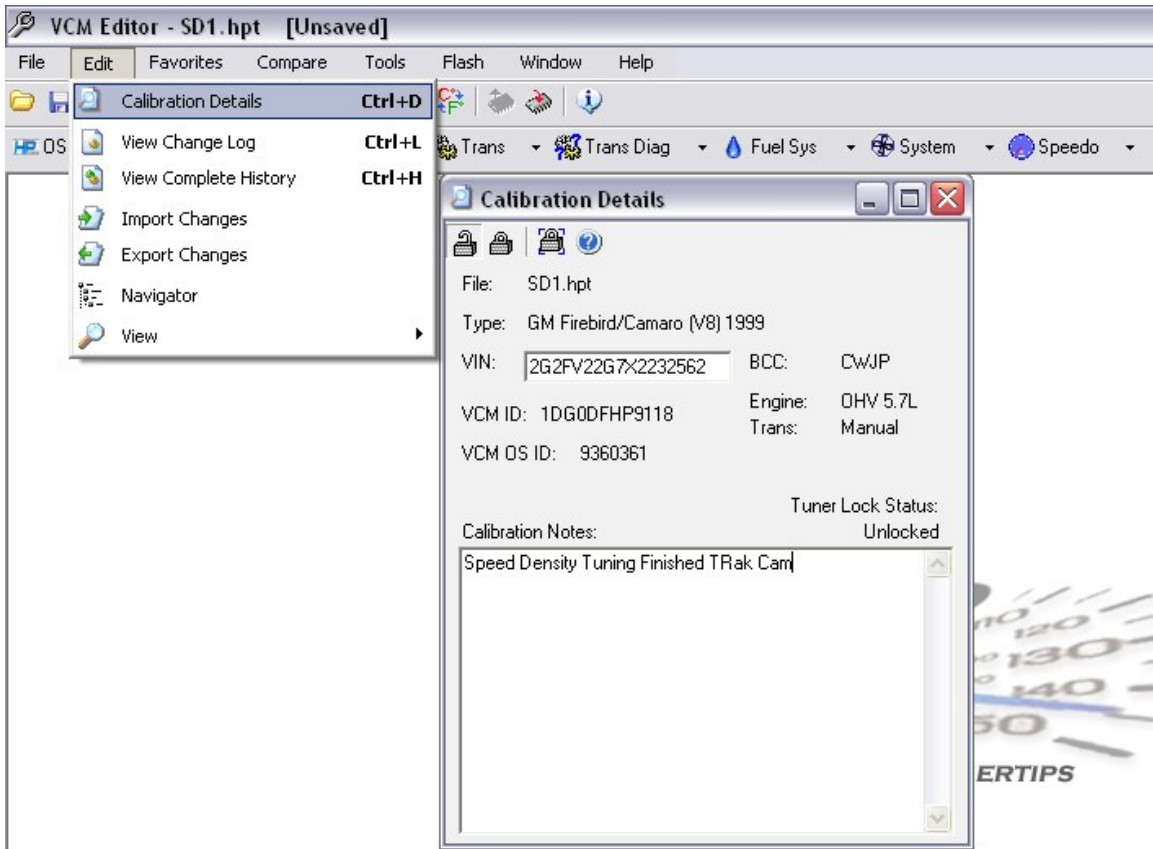
Export Changes-non active

Navigator-This will give you the option of a tree style navigation

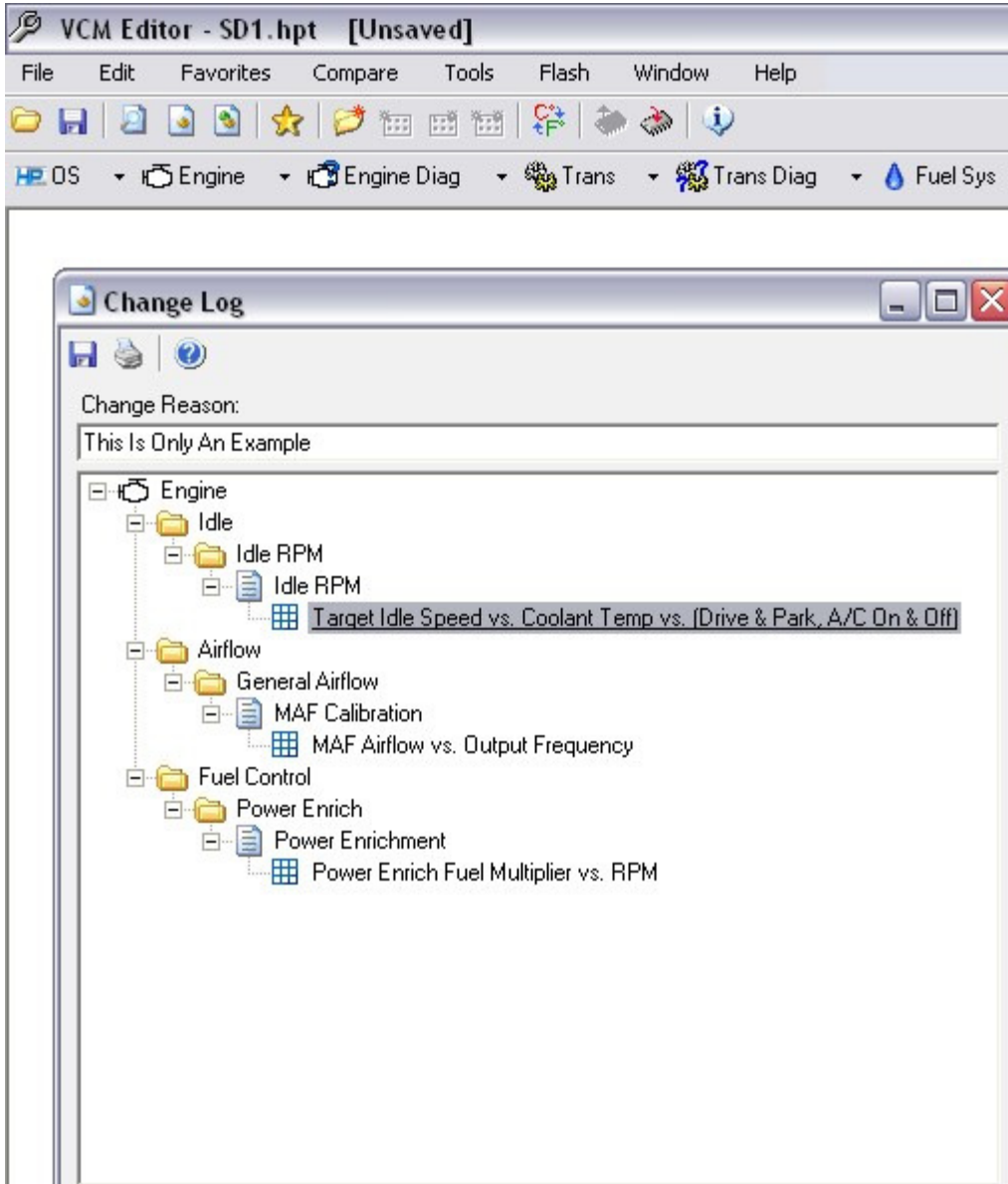
View-This is where you can choose your level of knowledge Basic, Standard, Advanced. The higher the level the more parameters will be shown. This is done so a beginner isn't overwhelmed with parameters he'll rarely if ever use.

Next up is the edit menu where you can view details of the file that you've opened.

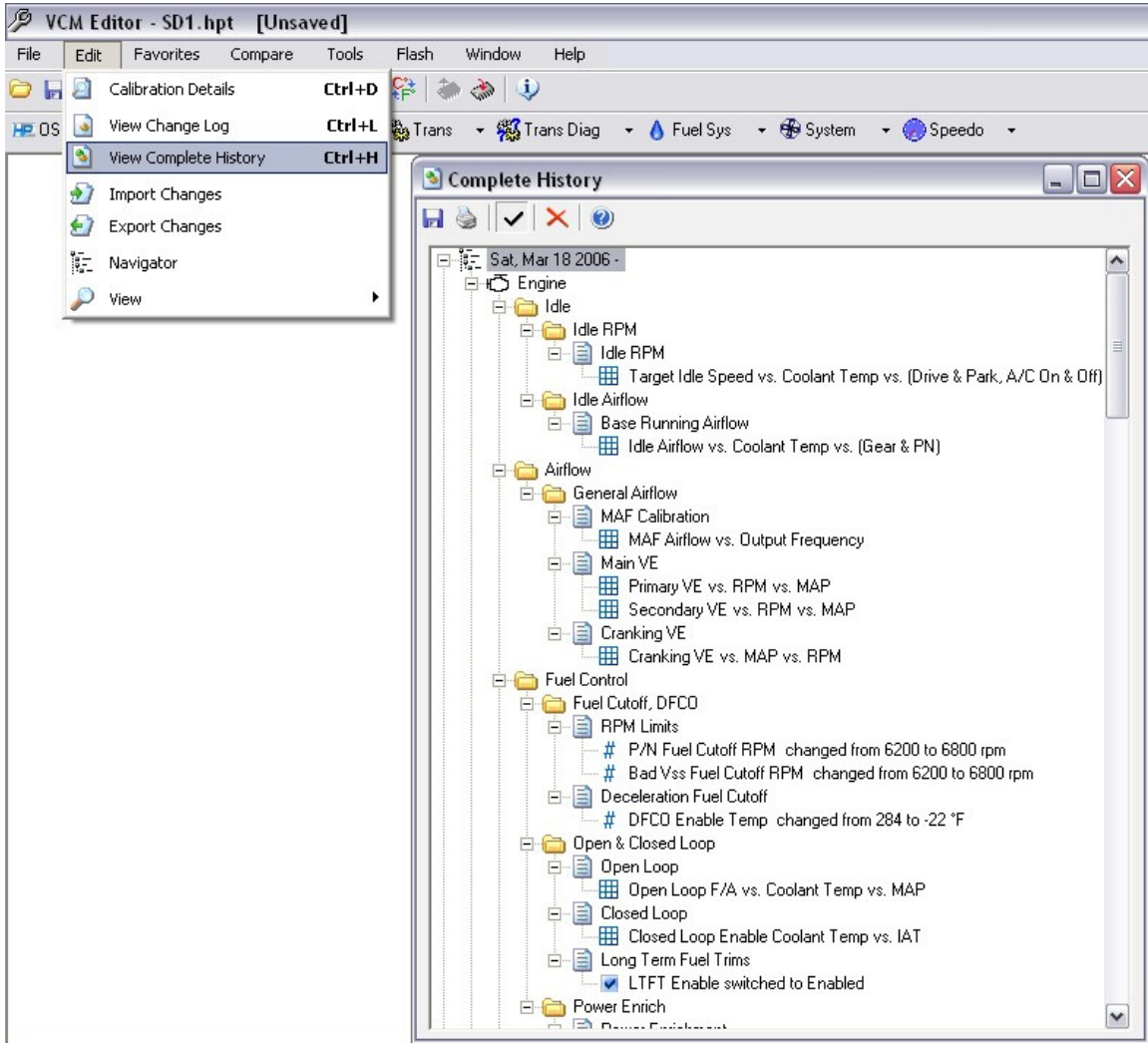
Calibration Details-Here you can view or enter notes about the car or really whatever you'd like. You can also view the Year & model, Vin #, OS ID # and prepare for tunerlocking.



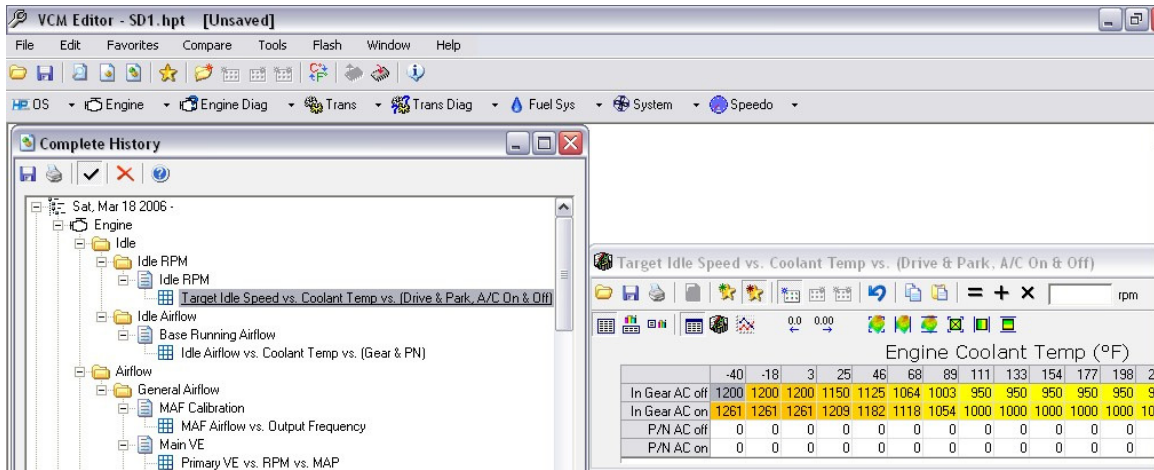
View Change Log-This will show you everything that's been done in this particular session. You can also add comments such as the one shown. Also editing one of the changed parameters is as simple as a double click at this point.



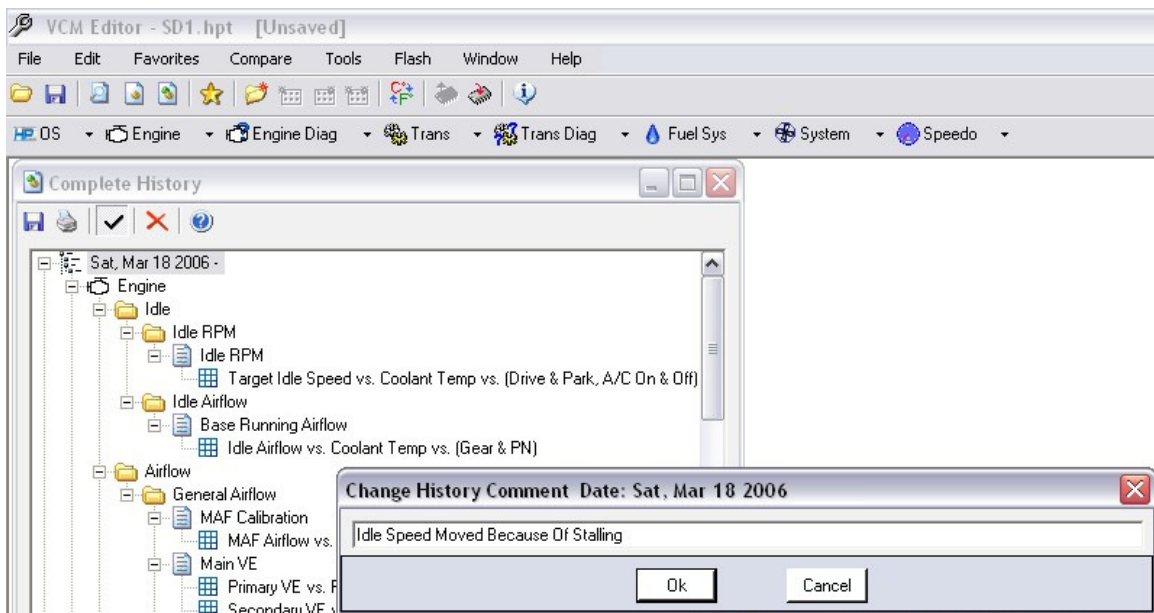
View Complete History-This will show you what tables have been changed since the beginning and by how much.



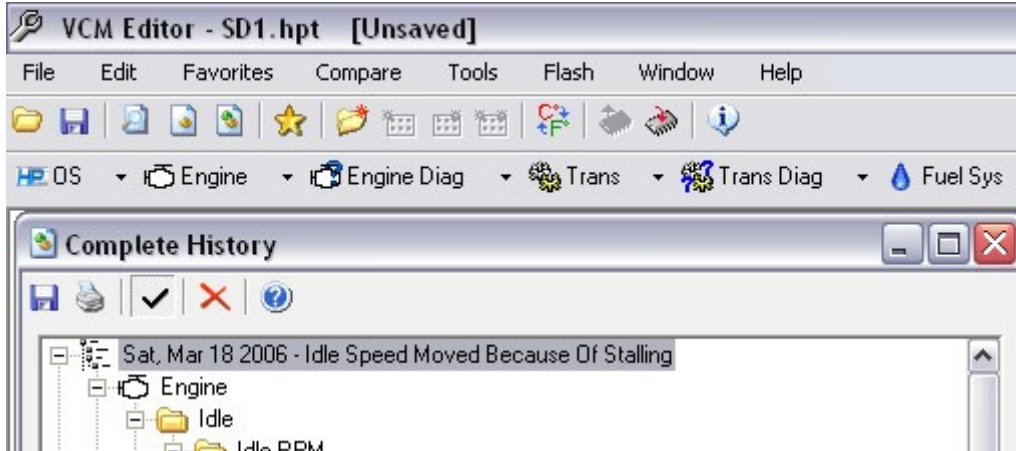
Editing these parameters is as simple as double clicking on a line.



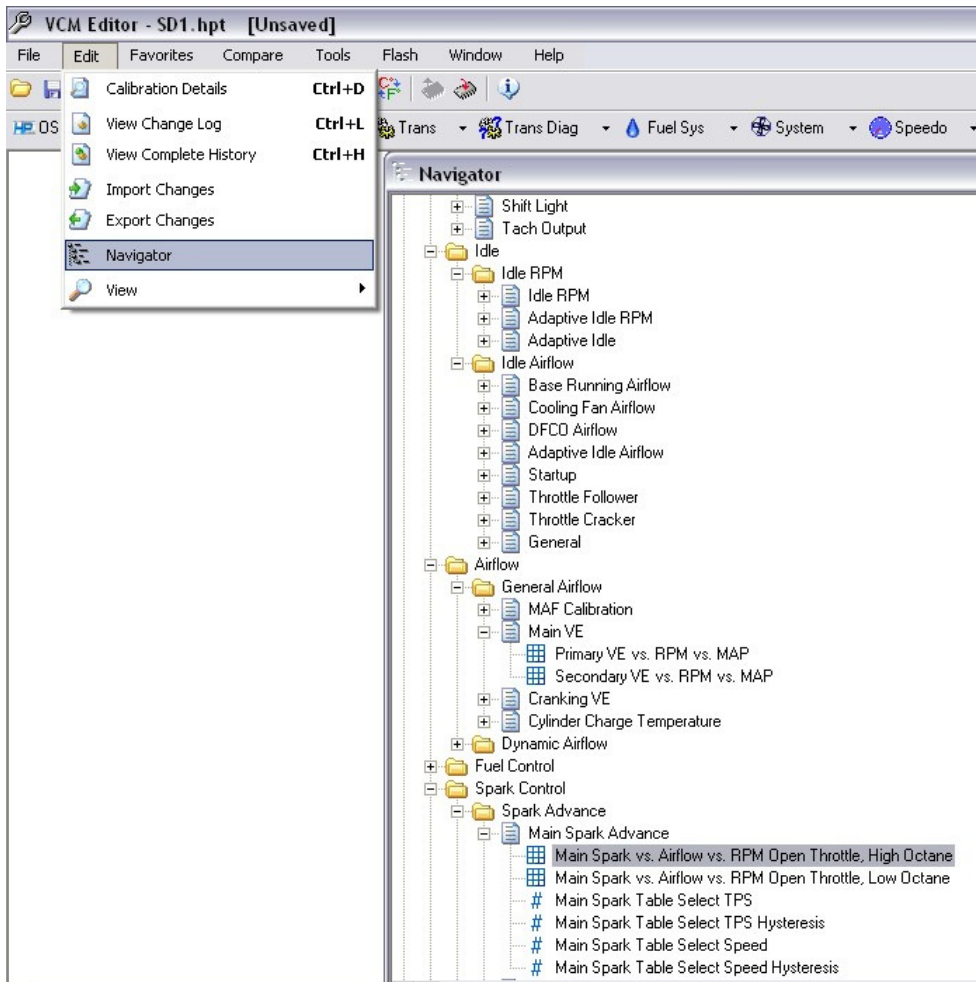
Also if you right click with your mouse you can enter comments as to why you made changes



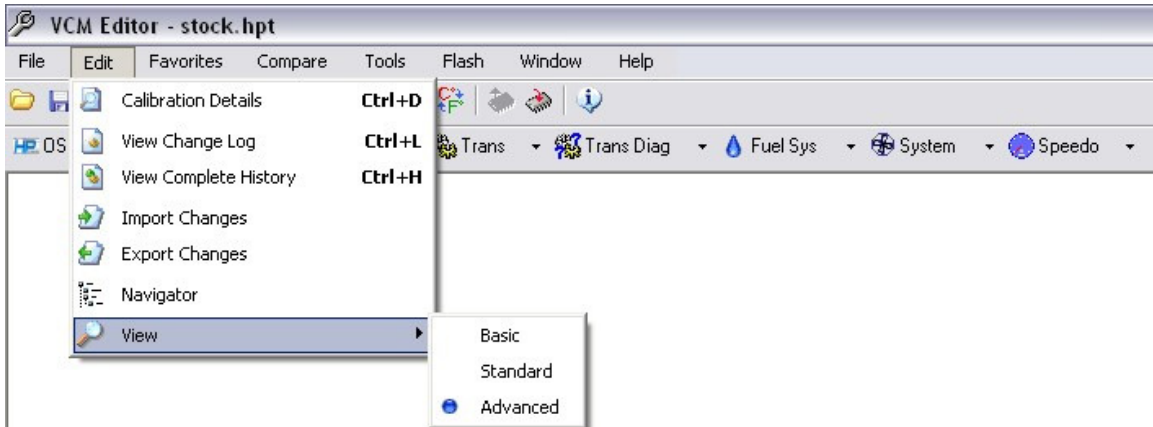
It will then be listed under the days date that the changes were made



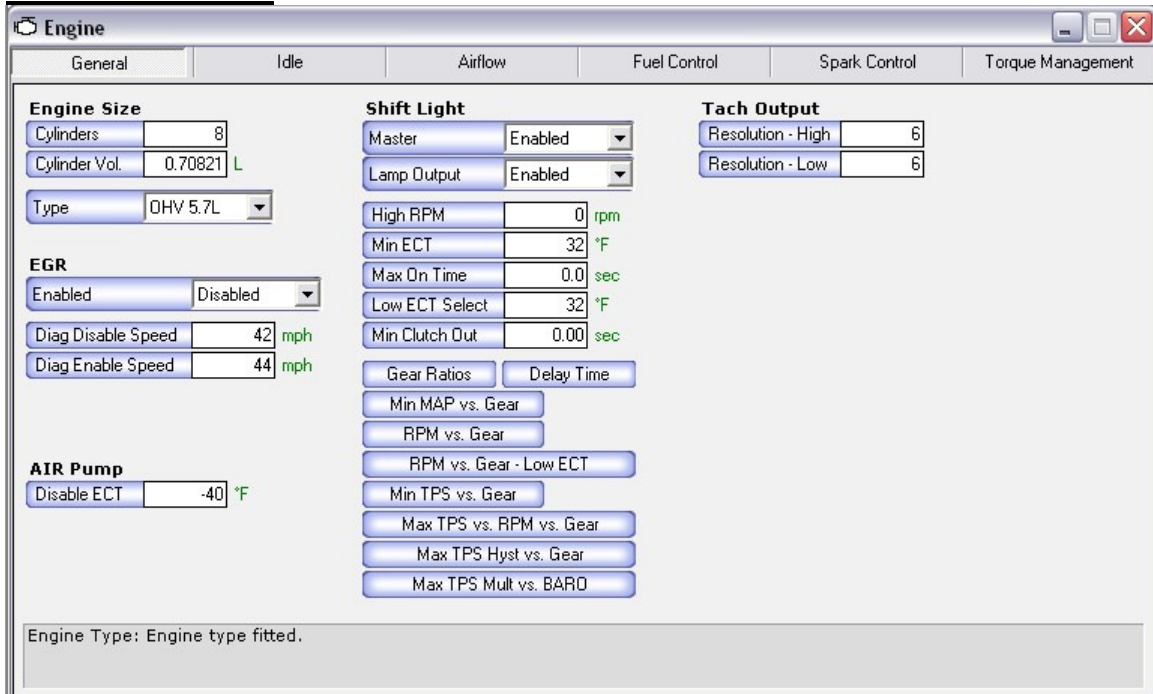
Navigator-HPTuners offers you many different ways to navigate through their system...this tab will open the tree style Navigator if this is your preferred way to view your parameters.



View-Where you can change your level of tuning knowledge the higher the knowledge the more parameters you'll be able to view. The lower the level the less parameters you'll be able to view as to not confuse you.



ADVANCED VIEW



BASIC VIEW

Engine [min] [max] [close]

General | Idle | Airflow | Fuel Control | Spark Control | Torque Management

Engine Size
Cylinder Vol. L

Shift Light
High RPM rpm

Tach Output
Resolution - High
Resolution - Low

EGR
Enabled ▾
Diag Disable Speed mph
Diag Enable Speed mph

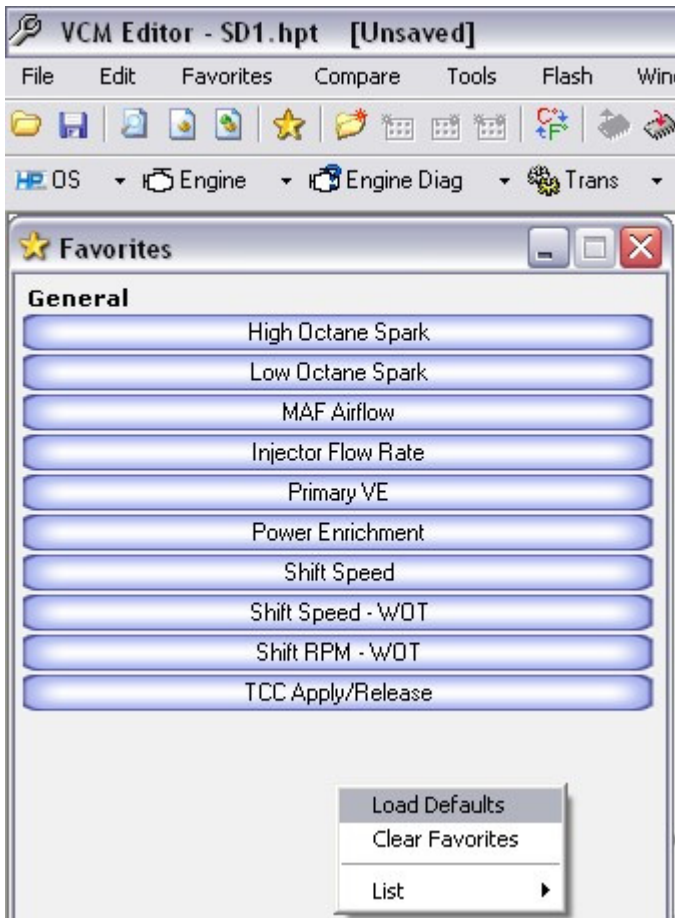
AIR Pump
Disable ECT °F

FAVORITES

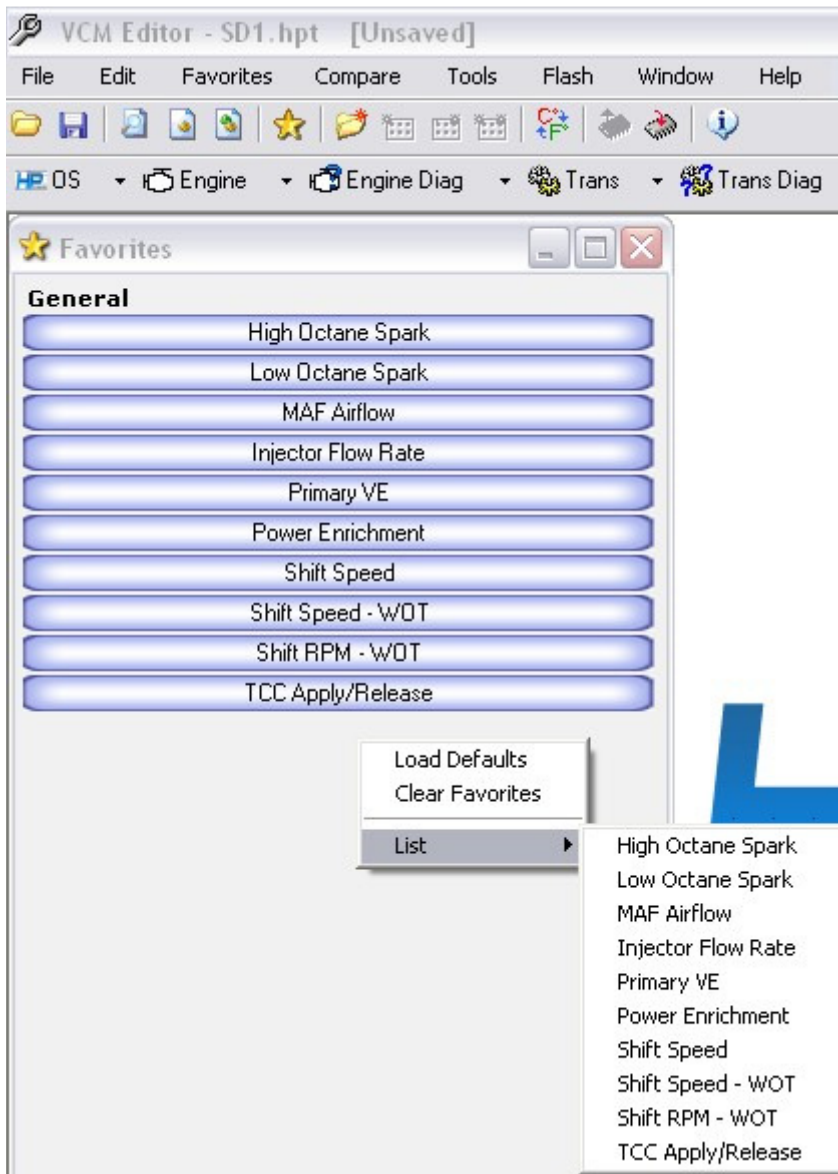
This can be a very powerful tool if you start tuning others. Here you can set it up so you literally are at each of the parameters that you'd normally change all in just one screen.



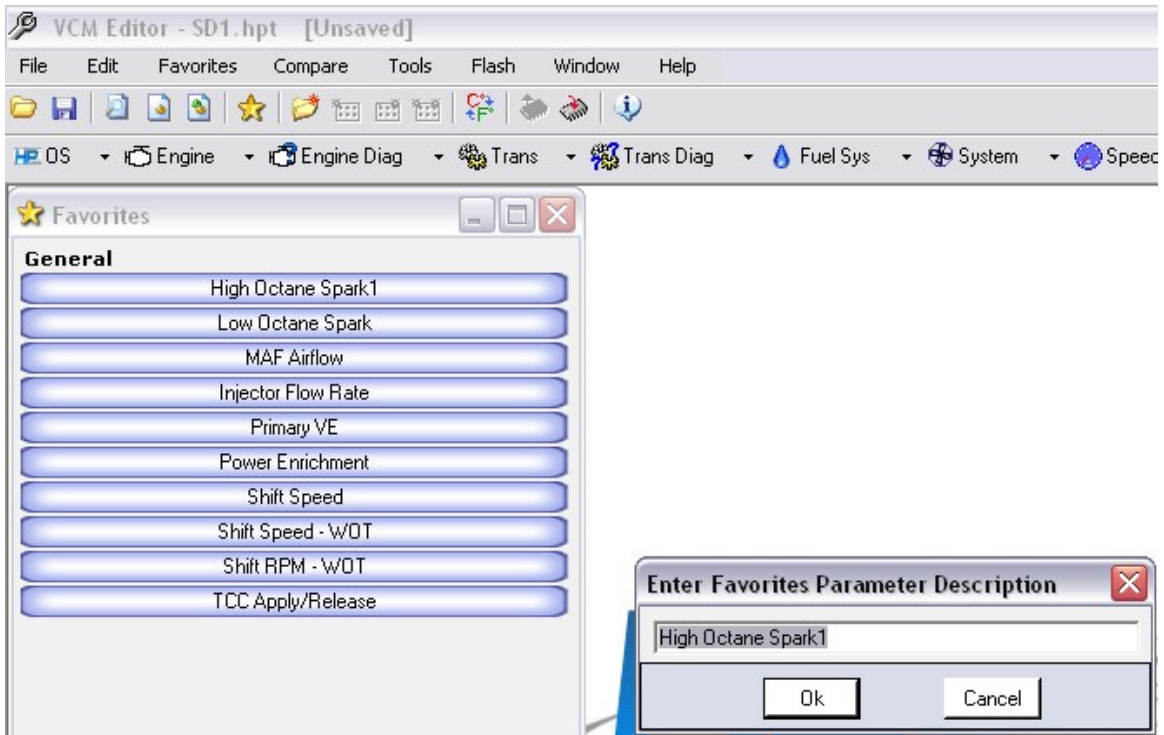
Here you can see the default favorites which can be loaded by just right clicking, like so.



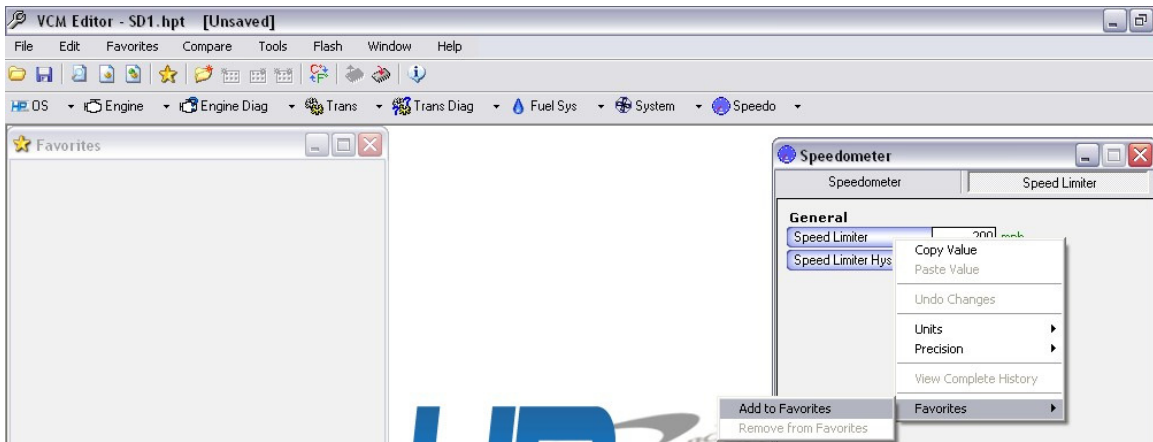
If you click on the “List” drop down you can then edit the title of each favorite



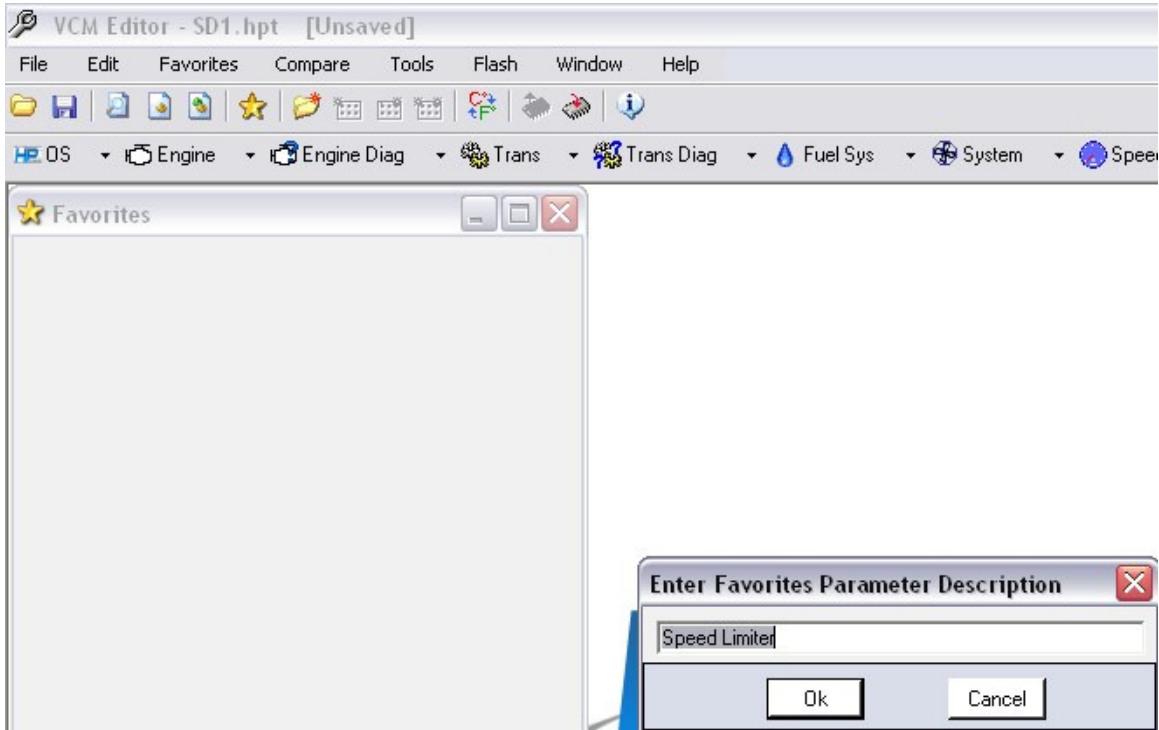
Like so



You can setup your favorites menu by just going to one of the parameters & simply right clicking with your mouse go to the favorites drop down menu and select “add to favorites”



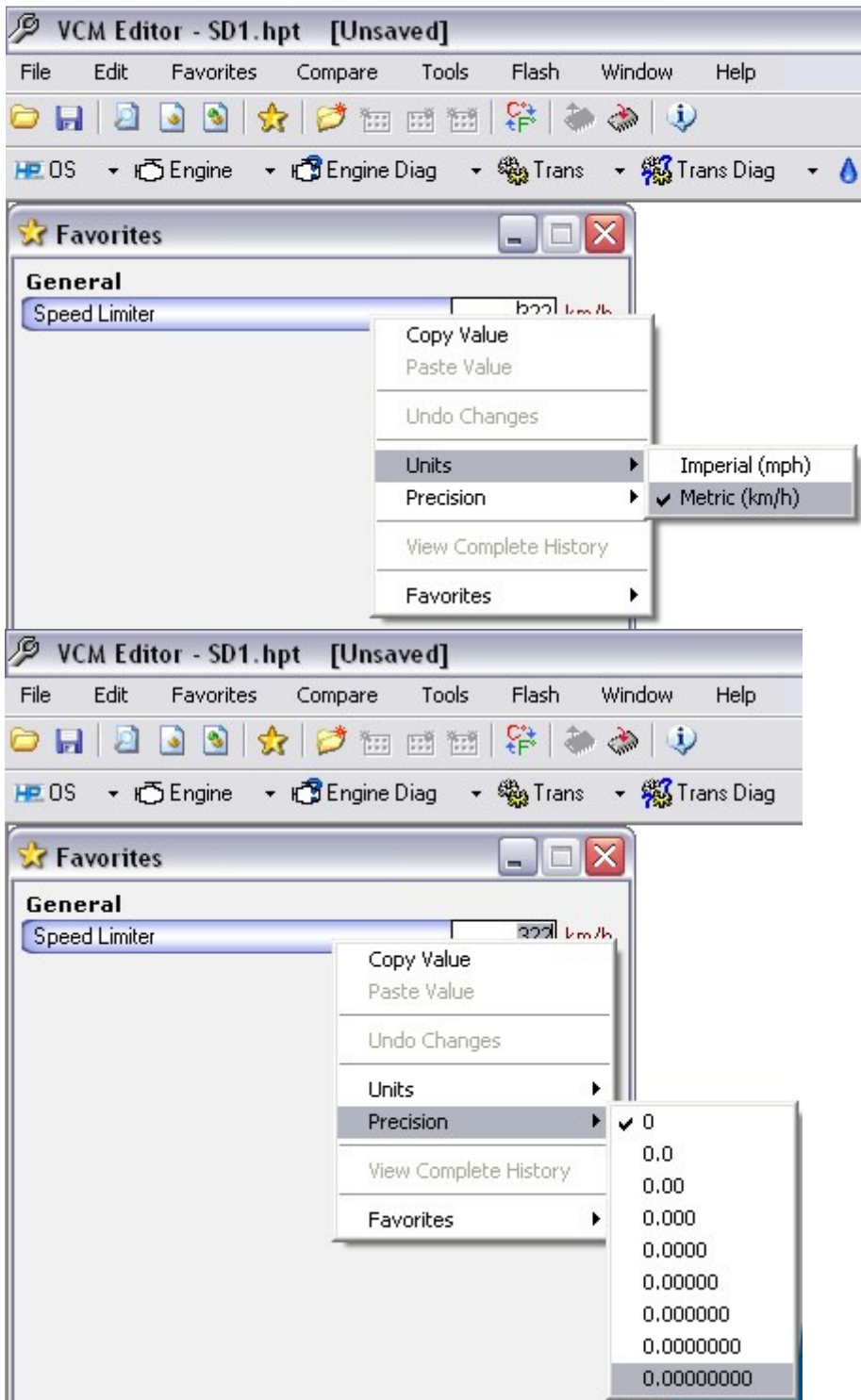
It will then prompt you for what you'd like to name the favorites table. It will enter a generic name but you can name it whatever you'd like if you'd like to shorten it or make it more descriptive.



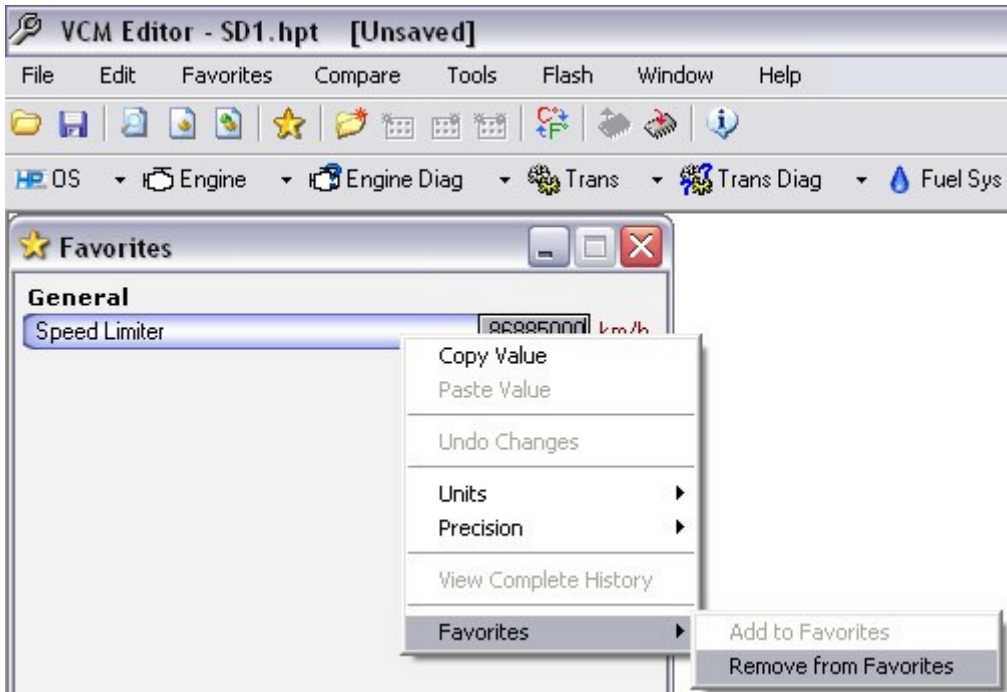
It will then be added to your favorites as shown



One of the great things about HPTuners is that you can change individual parameters to different units or precision rather than having to do EVERYTHING in one unit like some other programs like tunercat require.

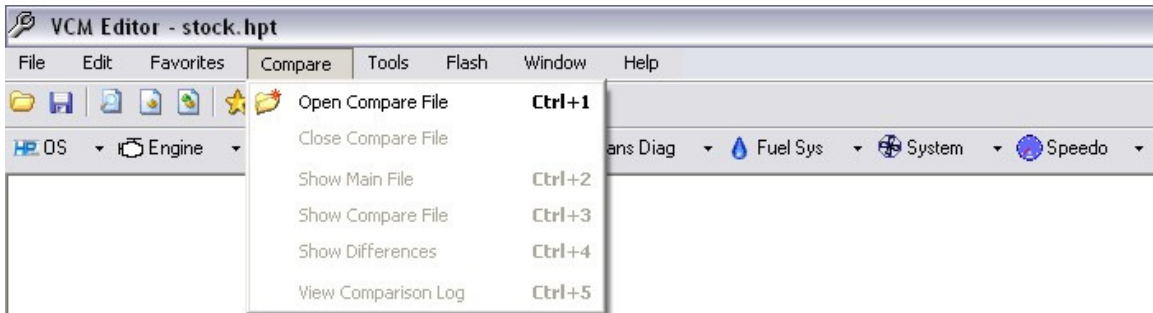


To remove a single table or parameter its as simple as right clicking on the parameter you'd like to remove and selecting "Remove from favorites" under the favorites drop down menu

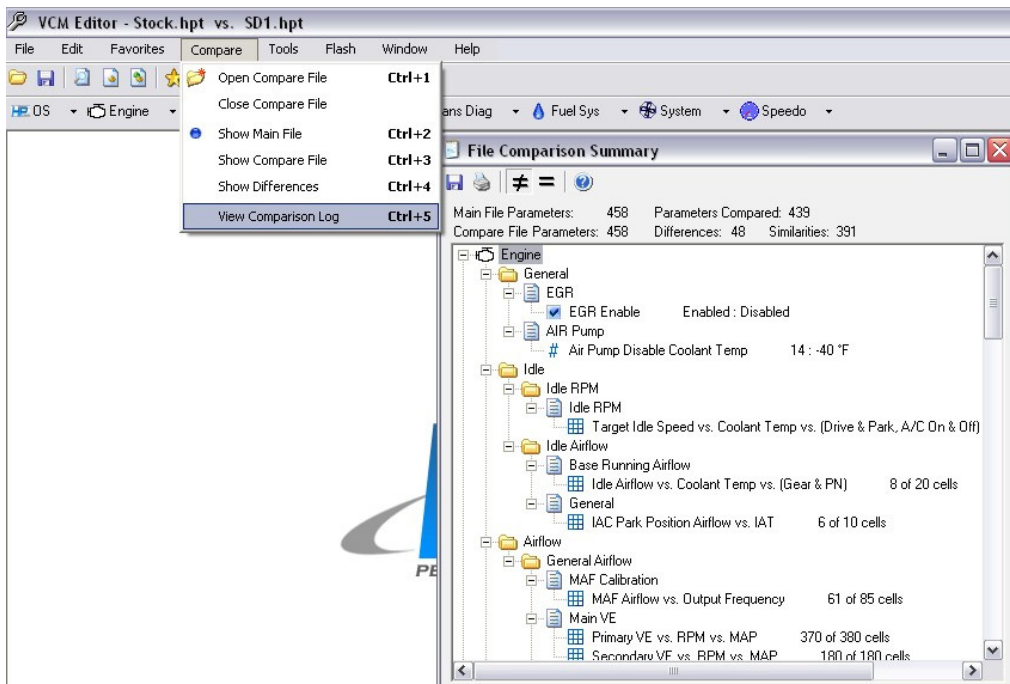


COMPARE

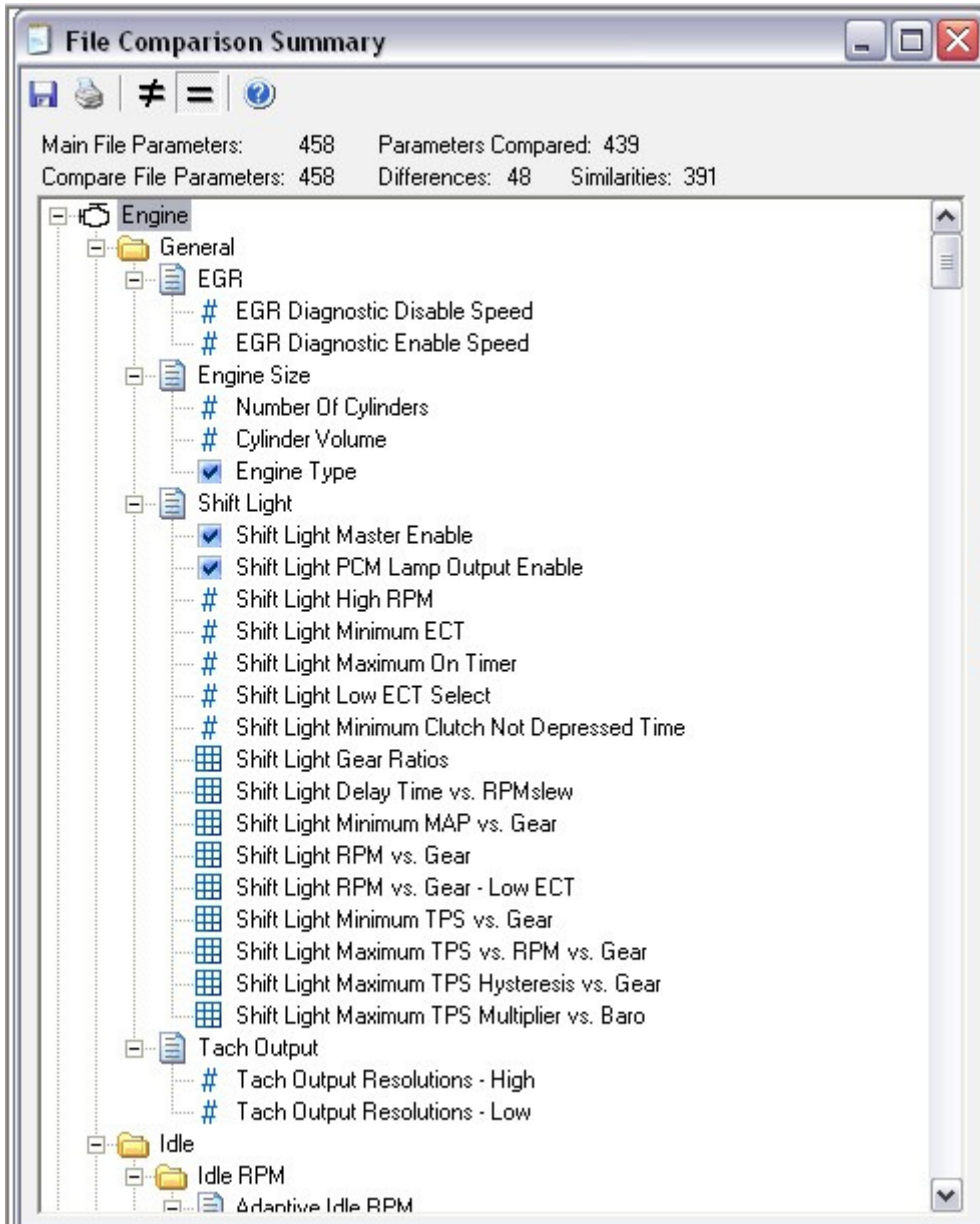
Here you can compare two like or unlike files. Unlike some other programs, with hptuners, you can compare an 02 V8 Silverado file to an 97 V6 Fbody file if you'd like. It will pull up all of the tables that are similar in format for you to view the differences. For the most part though best results will be found by viewing 2 similar files ie 00 V8 fbody vs. 00 V8 fbody since even between years some tables change the values used.

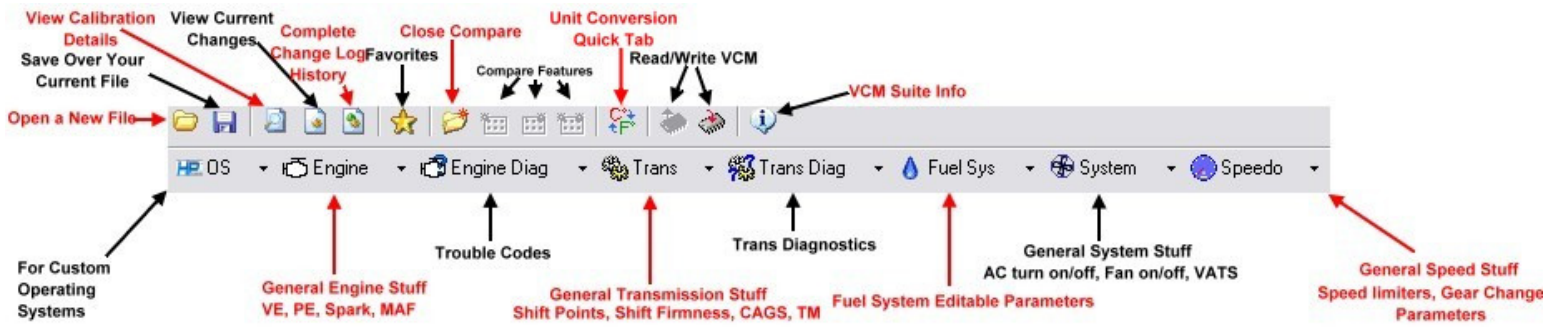


Under View Comparison Log you can see each and every difference & by how much. It will list the amount of total parameters, the amount of parameters compared, the # of differences & the # of similarities.

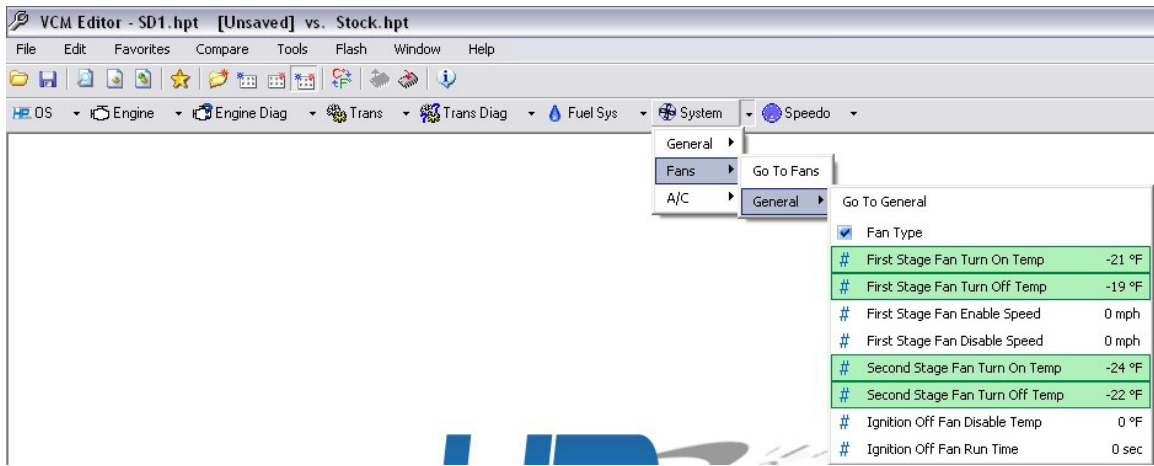


You can also choose the = sign to show all of the similar parameters.



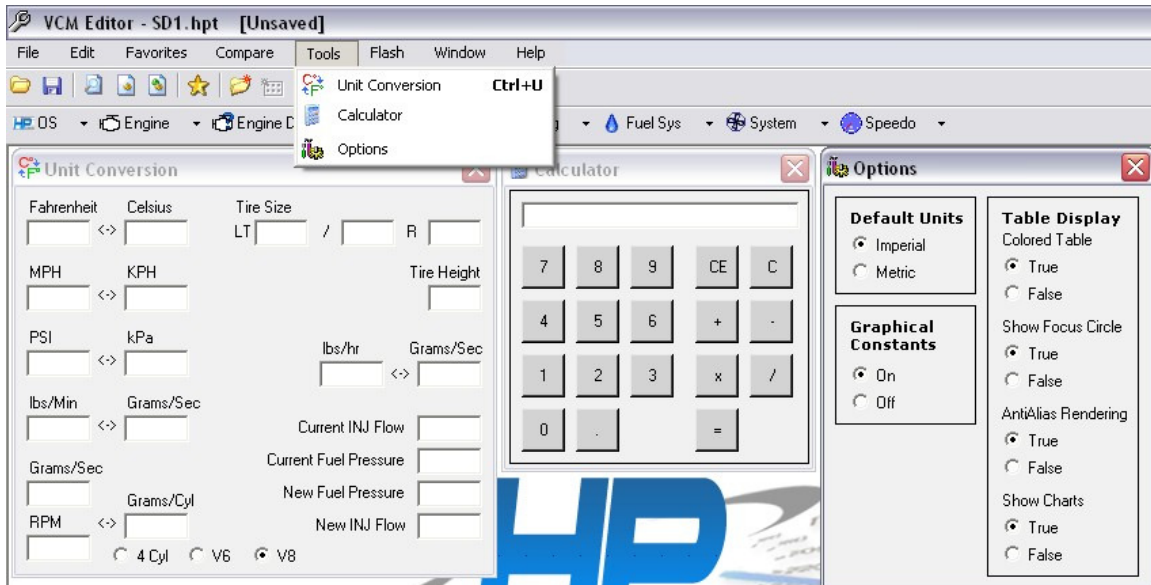


Another way to view differences is by using the drop down menus with the “Difference” tab clicked

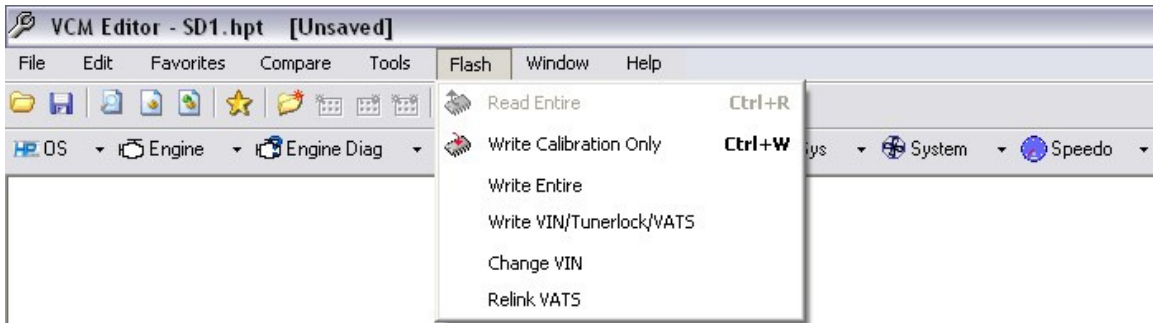


TOOLS

Often overlooked is the tools drop down menu. Here you have quick access to a simple calculator and a unit conversion table great for figure out tire sizes which will help greatly when trying to figure out what numbers to plug in when doing gear changes. Also the options menu is under here where you can change the overall unit of measure used, different graphical options, focus circle select for 3d graphs and a few other things.



FLASH



Read Entire-When connected to a vehicle you can choose to read it if your connecting for the first time

Write Calibration Only-This should be used for 99.9% of the time and is the safest way to flash your computer. Write times for most LS1's should be in the 22-30 second range, any longer & you've got issues to track down.

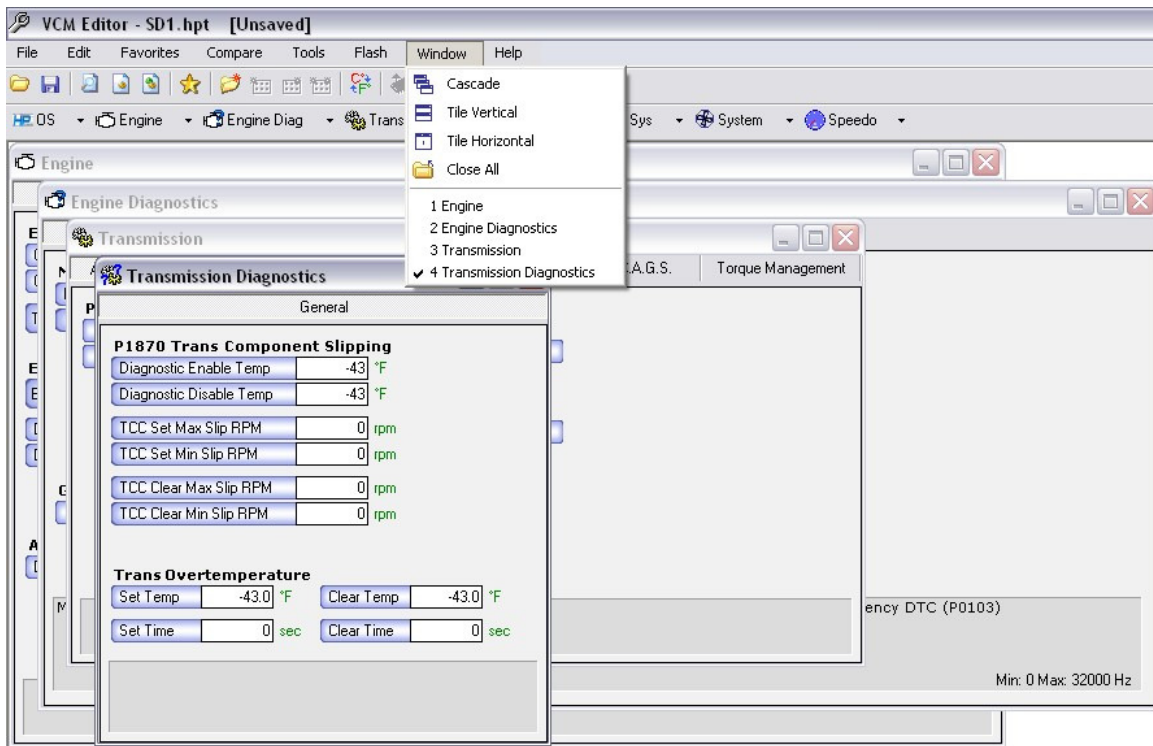
Write Entire-This should be used **ONLY** when writing a new Operating system or Tunerlocking. There is a chance you can kill your computer by using write entire so use it sparingly.

Write Vin/Tunerlock/Vats-

Change VIN-

Relink VATS-

WINDOW



Cascade-Cascades all windows as shown

Tile Vertical-Similar to cascade but just lists them down

Tile Horizontal-Similar to the above but lists them to the right

Close all-Will close all current windows

Also as you can see you can quickly sort through whatever windows are open currently just by selecting the table with a check mark.

HELP



Help-Brings up the Help File

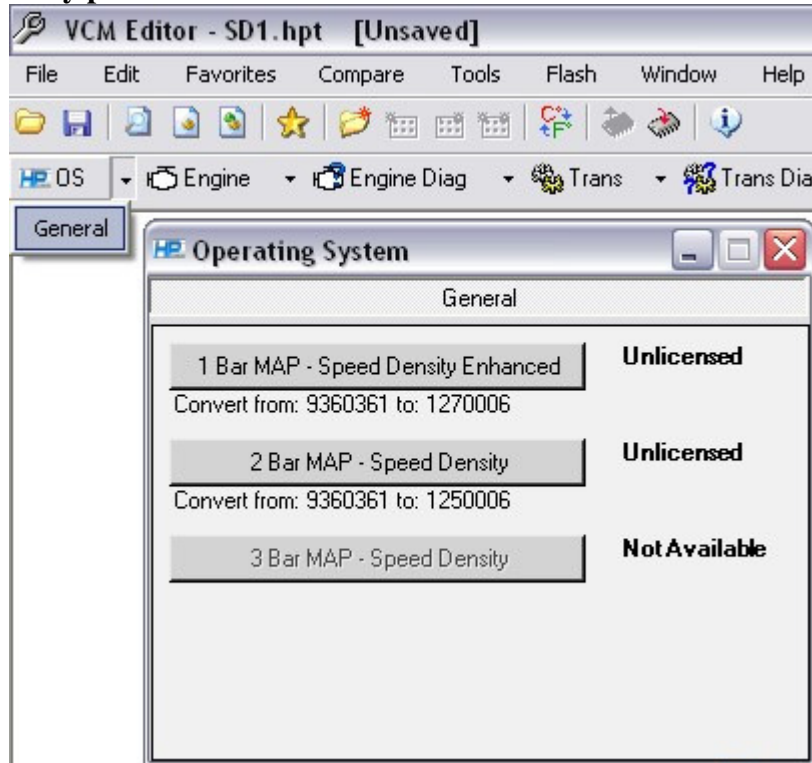
License Info-Brings up info about which license you have

VCM Suite Info-When connected to a vehicle this will pull up the info for that particular VCM

About-Information about what version of Hptuners your currently using

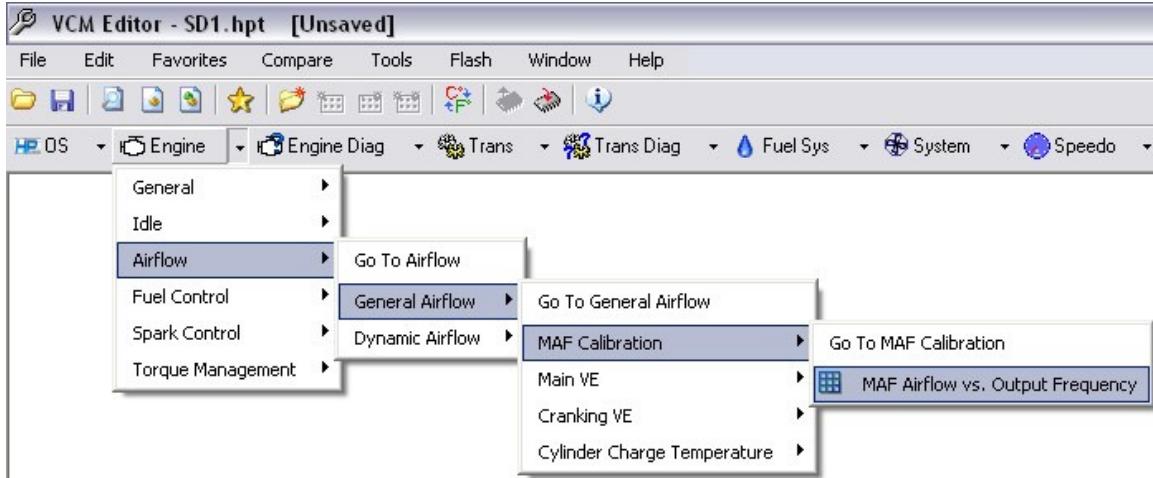
Operating System

This is where you apply different custom Operating systems. One, Two, & Three bar as well as any patches.

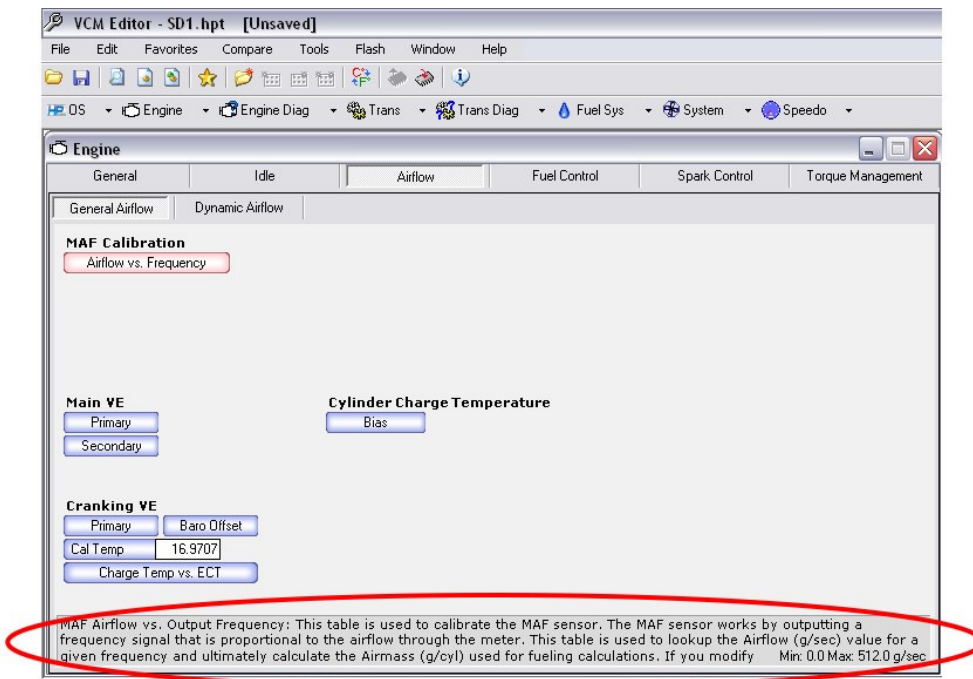


TABS

When you are just attempting to modify your current file these are the “normal” ways to access the tables. You can either use the drop down menus as shown below.



Or you can click directly on the key words(Engine, Engine Diag, Trans, Trans Diag, Fuel sys, System, Speedo) and the tab containing all parameters for that Key word will come up. Just click on the tabs within to locate the needed parameter. As you can see when you hover over a specific tab a brief description will come up at the bottom of your screen explaining what it is & its limits.



When you open a tab you'll find all the available options right at your fingertips. Smoothing, Interpolation, copy/paste, saving & opening txt files, etc.

Remove from favorites
 Add to Favorites
 Print Table
 Save Table AS
 Open in insert Saved Table
 Single Display View
 Dual Display Graph On Top
 Dual Display Graph On Side
 View Table
 View 3d graph
 View 2d graph
 Remove Decimals Less Precision
 Add Decimals More Precision
 Smooth All Selected
 Smooth Left & Right
 Smooth up & down
 Interpolate All Selected
 Interpolate Left & Right
 Interpolate up & down

Undo All
 Paste Entire
 Copy Entire
 Undock Table for use in Scanner or elsewhere

Engine Speed (rpm)

	400	800	1200	1600	2000	2400	2800	3200	3600	4000	4400	4800	5200	5600	6000	6400	6800	7200	7600	8000	
15	44	48	45	45	45	41	42	44	54	52	50	48	46	46	46	46	46	46	46	46	46
20	44	48	49	49	49	51	52	53	72	70	68	66	64	64	64	64	64	64	64	64	64
25	44	49	52	55	57	56	58	60	65	68	71	74	77	77	77	77	77	77	77	77	77
30	44	49	54	57	59	60	62	64	68	71	74	77	80	80	80	80	80	80	80	80	80
35	46	51	56	59	61	62	64	66	70	73	76	80	83	83	83	83	83	83	83	83	83
40	48	53	59	61	63	64	66	68	72	75	78	82	85	85	85	85	85	85	85	85	85
45	49	54	59	62	64	66	68	70	74	77	80	83	86	86	86	86	86	86	86	86	86
50	51	56	60	63	65	67	69	71	75	78	81	84	87	87	87	87	87	87	87	87	87
55	52	57	60	63	65	67	69	71	75	78	81	84	88	88	88	88	88	88	88	88	88
60	55	58	60	62	65	68	70	72	76	79	82	86	89	89	89	89	89	89	89	89	89
65	56	59	61	63	66	68	71	73	77	80	83	86	89	89	89	89	89	89	89	89	89
70	57	60	62	64	67	69	72	74	77	81	84	87	90	90	90	90	90	90	90	90	90
75	58	61	63	65	68	70	72	75	78	81	85	88	91	91	91	91	91	91	91	91	91
80	59	62	64	66	69	71	73	75	79	82	85	88	92	92	92	92	92	92	92	92	92
85	60	63	65	67	70	72	74	76	80	83	86	89	92	92	92	92	92	92	92	92	92
90	62	65	67	69	70	72	75	77	82	84	87	89	92	92	92	92	92	92	92	92	92
95	64	67	69	70	72	73	76	79	83	86	88	91	93	93	93	93	93	93	93	93	93
100	66	69	71	72	73	75	77	80	85	87	90	92	95	95	95	95	95	95	95	95	95
105	66	69	71	72	73	75	77	80	85	87	90	92	95	95	95	95	95	95	95	95	95

