



# **GM E90/T93 Upgrade Kit**





## **Procedure and Cable Installation**

### **Instructions**

## Disclaimer:

These cables are used to upgrade the GM E90 ECM and GM T93 TCM in the supported vehicle. Once the upgrade is completed, VCM Editor will instruct you to uninstall the cable. DO NOT attempt to start the vehicle or drive with the cable installed.

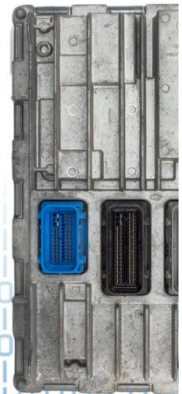
## What's included in this kit?

E90/T93 Upgrade Box	
2.1mm Power Cable	
HPTNet Cable	
E90 ECM Upgrade Harness	

T93 TCM Upgrade  
Harness



## GM E90 ECM UPGRADE INSTRUCTIONS



### Installation Instructions – E90 ECM

These instructions are for the E90 ECM harness. Please follow the instructions carefully.

**STEP 1)** Download and install the latest VCM Suite BETA from our website:  
[www.hptuners.com/downloads](http://www.hptuners.com/downloads)

**STEP 2)** Install the GM E90 Upgrade Kit:

1. Open the hood of the vehicle and disconnect your vehicle's battery.
2. Locate the E90 ECM in your vehicle. It will be mounted behind the driver's side wheel well liner. You will need to remove some plastic push-tabs and screws to pull the wheel liner back enough to reach the ECM.
3. Disconnect all 3 ECM harness connectors from the ECM.
4. Connect the supplied E90 Upgrade Harness to the BLUE and GRAY connectors of the ECM. The middle BLACK connector will be left disconnected.
5. Connect the HPTNet cable (cable with M8 connectors) to the MPVI3 and the Upgrade Box.
6. Plug your MPVI3 into the OBDII port on the Upgrade Box.
7. Plug the 8-pin connector on the E90 Upgrade Harness into the Upgrade Box.

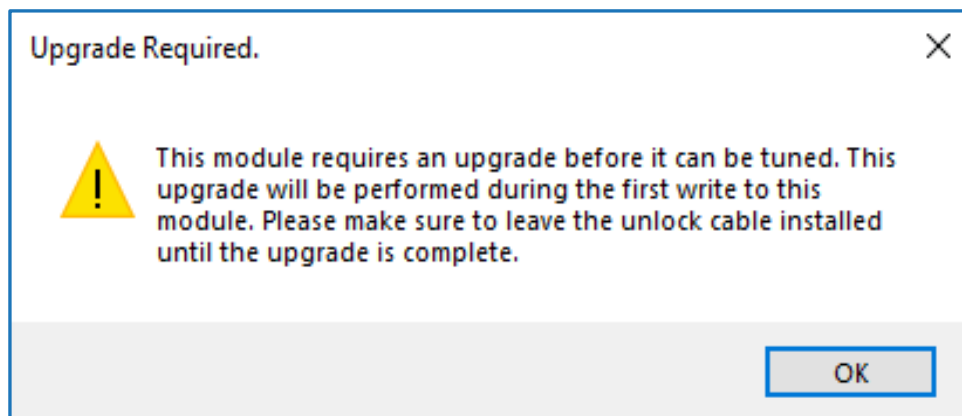
8. Plug the 2.1mm barrel plug of the supplied power cable (with alligator clips) into the Upgrade Box.
9. Connect the alligator clips of the power cable to the vehicle's battery. Be sure to connect the **RED** alligator clip to the POSITIVE (+) battery terminal, and the **BLACK** alligator clip to the NEGATIVE (-) battery terminal.
10. Plug your MPVI3 into your PC with a USB-C cable.

### STEP 3) "Read" your vehicle in VCM Editor software.

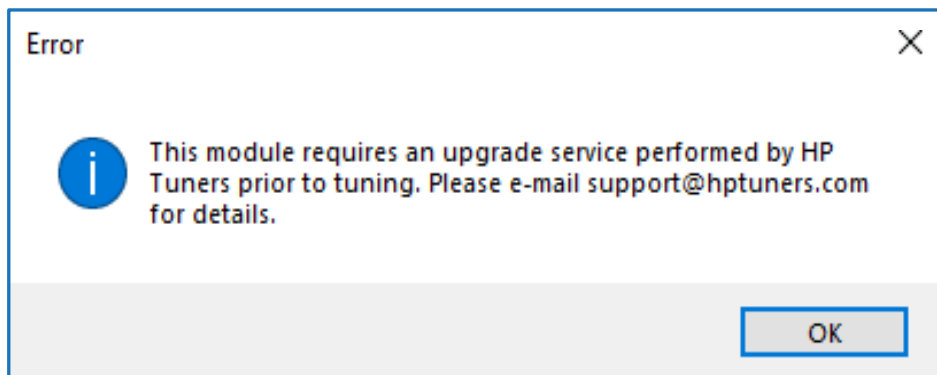
1. Open the latest version of VCM Editor BETA on your PC.
2. Read the vehicle by going to the "Flash" menu and selecting "Read Vehicle". If the cable is installed and the module has not been upgraded yet, you will receive a window with the following message:

*"This module requires an upgrade before it can be tuned. This upgrade will be performed during the first write to this module. Please make sure to leave the unlock cable installed until the upgrade is complete."*

**Note:** If you do not receive this message and you are not provided with a stock file to tune the vehicle, check the cable installation. If you do not receive this message and are provided with a stock file to tune the vehicle, then the ECM is already upgrade. Please uninstall the cable and tune the vehicle as normal.



**Note:** If the upgrade cable is not installed, you will receive the following window and the read will exit.



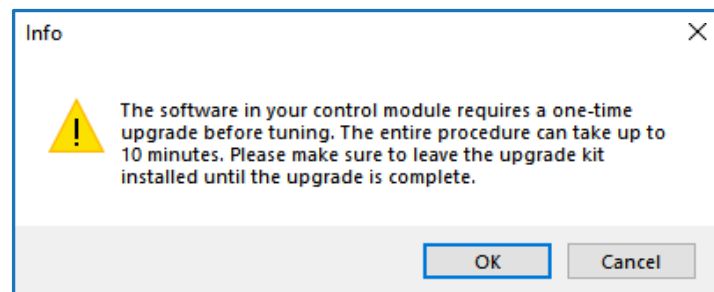
## STEP 4) Modify the stock file (optional)

- The upgrade will take place during the first write of the module. You can make your initial changes prior to this write or you can perform the upgrade using the supplied stock file without any changes.

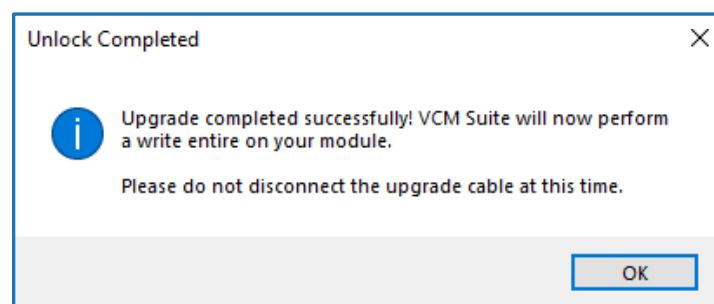
## STEP 5) Write the Module and Perform the Upgrade.

- 1) With the upgrade cable still installed, license and prepare to write the ECM by going to the "Flash" menu and selecting "Write Vehicle".
- 2) Once the write begins, VCM Editor will perform the upgrade to the ECM first. This process may take up to 10 minutes. If the cable is installed, you will receive a window with the following message before the upgrade begins:

*"The software in your control module requires a one-time upgrade before tuning. The entire procedure can take up to 10 minutes. Please make sure to leave the upgrade kit installed until the upgrade is complete."*

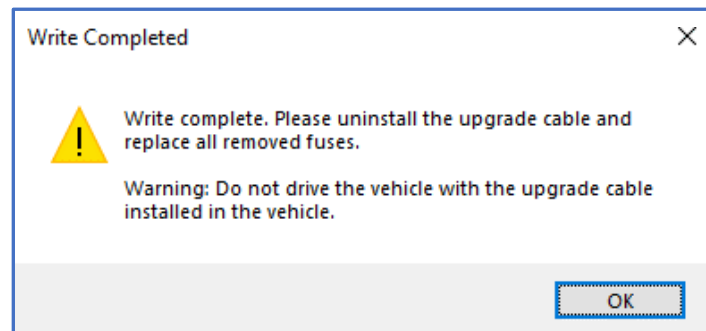


- 3) Once the upgrade is complete, you will receive a window with the following message: *"Upgrade completed successfully! VCM Suite will now perform a write entire on your module. Please do not disconnect the upgrade cable at this time."* Click "OK" and the write will begin.



- 4) After clicking OK on the previous window, VCM Editor will now perform a "Write Entire" of the currently loaded tune file to the ECM. Once this write finishes, you will receive the message:

*"Write complete. Please uninstall the upgrade cable and replace all removed fuses. Warning: Do not drive the vehicle with the upgrade cable installed in the vehicle."* At this time, please uninstall the upgrade cable.



#### STEP 6) Uninstall the E90 ECM Upgrade Kit

- 1) Turn the key to the OFF position.
- 2) Disconnect the alligator clips of the supplied power cable from the vehicle's battery.
- 3) Remove the E90 Upgrade Harness from the ECM's GRAY and BLUE connectors.
- 4) Re-install all 3 of the factory ECM harness connectors to the ECM.
- 5) Re-attach the driver side wheel liner with all removed screws and/or push-tab clips.
- 6) Re-connect the vehicle's battery.
- 7) Disconnect your MPVI3 from the Upgrade Box (unplug it from the Upgrade Box's OBDII port and disconnect the HPTNet cable connecting the two).
- 8) Plug your MPVI3 directly into the vehicle's OBDII port and you are ready to calibrate as you normally would.

**Complete!**

# GM T93 TCM UPGRADE INSTRUCTIONS



## Installation Instructions – T93 TCM

---

These instructions are for the T93 TCM harness. Please follow the instructions carefully.

**STEP 1)** Download and install the latest VCM Suite BETA software from our website:  
[www.hptuners.com/downloads](http://www.hptuners.com/downloads)

**STEP 2)** Install the T93 Upgrade Kit:

1. Open the hood of the vehicle and disconnect your vehicle's battery.
2. Locate the T93 TCM in your vehicle. It will be mounted behind the driver's side wheel well liner on the other side of the E90/E93 mounting bracket.
3. Once you have located the E90/E93 ECM behind the driver's side wheel well liner, remove the 3 bolts that are holding the ECM/TCM mounting bracket to the vehicle. Pull the mounting bracket towards you and this will provide access to the T93 TCM on the other side.
4. Disconnect the factory TCM harness connector from the T93 TCM.
5. Connect the supplied T93 Upgrade Harness to the T93 TCM.
6. Connect the HPTNet cable (cable with M8 connectors) to the MPVI3 and the Upgrade Box.
7. Plug your MPVI3 into the OBDII port on the Upgrade Box.
8. Plug the 8 pin connector on the T93 Upgrade Harness into the Upgrade Box.
9. Plug the 2.1mm barrel plug of the supplied power cable (with alligator clips) into the Upgrade Box.
10. Connect the alligator clips of the power cable to the vehicle's battery. **Be sure to connect the RED alligator clip to the POSITIVE (+) battery terminal, and the BLACK alligator clip to the NEGATIVE (-) battery terminal.**
11. Plug your MPVI3 into your PC with a USB-C cable.

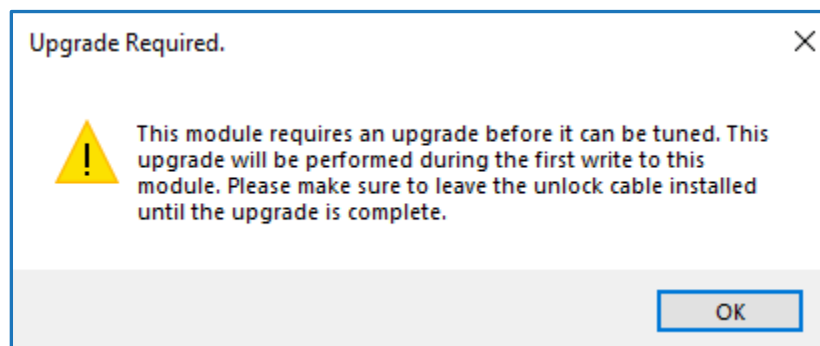
**STEP 3)** "Read" your Vehicle using VCM Editor



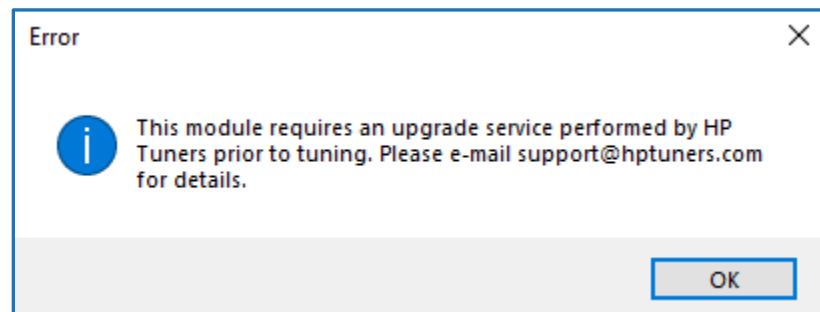
1. Open VCM Editor BETA
2. Read the vehicle by going to the "Flash" menu and selecting "Read Vehicle". If the cable is installed and the module has not been upgraded yet, you will receive a window with the following message:

*"This module requires an upgrade before it can be tuned. This upgrade will be performed during the first write to this module. Please make sure to leave the unlock cable installed until the upgrade is complete."*

**Note:** If you do not receive this message and you **are not** provided with a stock file to tune the vehicle, check the cable installation. If you do not receive this message and **are** provided with a stock file to tune the vehicle, then the ECM is already upgrade. Please uninstall the cable and tune the vehicle as normal.



**Note:** If the upgrade cable is not installed, you will receive the following window and the read will exit.



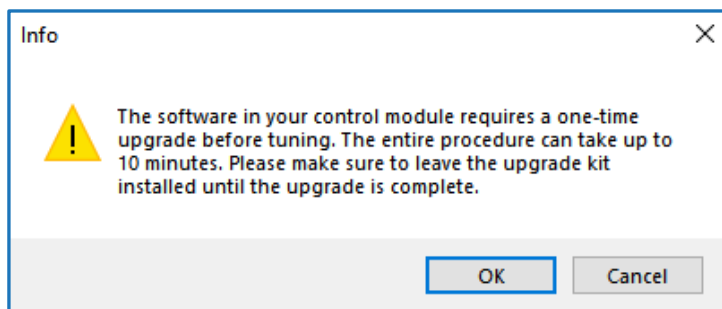
#### STEP 4) Modify the stock file (optional)

1. The upgrade will take place during the first write of the module. You can make your initial changes prior to this write or you can perform the upgrade using the supplied stock file without any changes.

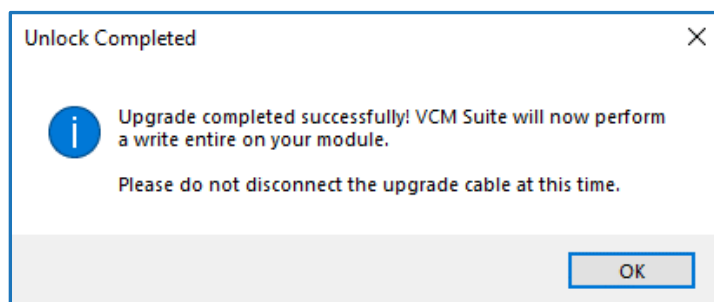
## STEP 5) Write the Module and Perform the Upgrade

- 1) With the upgrade cable still installed, license and prepare to write the ECM by going to the "Flash" menu and selecting "Write Vehicle".
- 2) Once the write begins, VCM Editor will perform the upgrade to the ECM first. This process may take up to 10 minutes. If the cable is installed, you will receive a window with the following message before the upgrade begins:

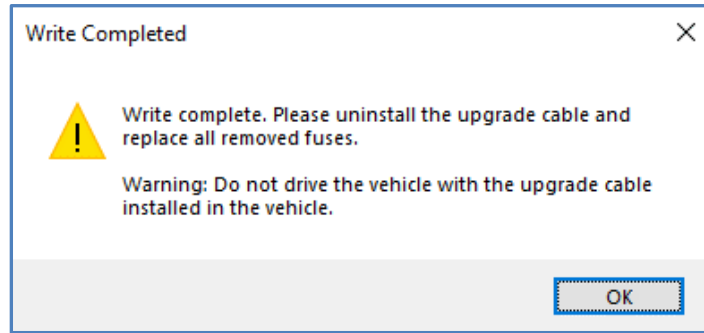
*"The software in your control module requires a one-time upgrade before tuning. The entire procedure can take up to 10 minutes. Please make sure to leave the upgrade kit installed until the upgrade is complete."*



- 3) Once the upgrade is complete, you will receive a window with the following message:  
*"Upgrade completed successfully! VCM Suite will now perform a write entire on your module. Please do not disconnect the upgrade cable at this time."* Click "OK" and the write will begin.



- 4) After clicking OK on the previous window, VCM Editor will now perform a "Write Entire" of the currently loaded tune file to the ECM. Once this write finishes, you will receive the message:  
*"Write complete. Please uninstall the upgrade cable and replace all removed fuses. Warning: Do not drive the vehicle with the upgrade cable installed in the vehicle."* At this time, please uninstall the upgrade cable.



## STEP 6) Uninstall the T93 Upgrade Kit

- 1) Turn the key to the OFF position.
- 2) Disconnect the alligator clips of the supplied power cable from the vehicle's battery.
- 3) Remove the T93 Upgrade Harness from the TCM.
- 4) Re-install the factory TCM harness connector onto the TCM.
- 5) Re-attach the ECM/TCM mounting bracket to the vehicle by reinstalling the 3 bolts removed in Step 2.3.
- 6) Re-attach the driver side wheel liner with all removed screws and/or push-tab clips.
- 7) Re-connect the vehicle's battery.
- 8) Disconnect your MPVI3 from the Upgrade Box (unplug it from the Upgrade Box's OBDII port and disconnect the HPTNet cable connecting the two).
- 9) Plug your MPVI3 directly into the vehicle's OBDII port and you are ready to calibrate as you normally would.

**Complete!**

## Need Support?

---

If you need assistance with this product, please reach out to our support team by submitting a ticket.

Submit a Support Ticket:

[https://hptuners.freshdesk.com/support/tickets/new?ticket\\_form=need\\_technical\\_support](https://hptuners.freshdesk.com/support/tickets/new?ticket_form=need_technical_support)

Thank you for choosing HP Tuners!