

## Switch on the Fly: Ford 6.0L Power Stroke User Guide



## Contents

HP Tuners' Switch on the Fly.....	2
Preparing the ECM.....	3
Using Switch on the Fly.....	4
Frequently Asked Questions.....	5
Map Slots - Maximum Available .....	6

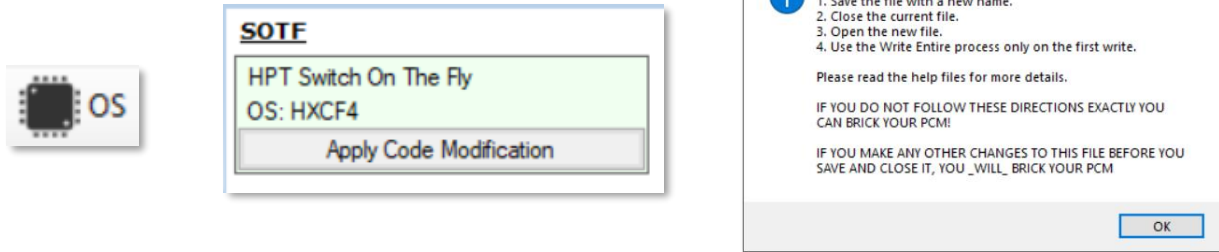
## HP Tuners' Switch on the Fly

We are proud to introduce "Switch on the Fly" (SOTF), an integrated ECM map switching solution for 2003-2007 Ford 6.0L Power Stroke diesel vehicles! This feature has been designed to work seamlessly with your vehicle as if it was included from the factory.

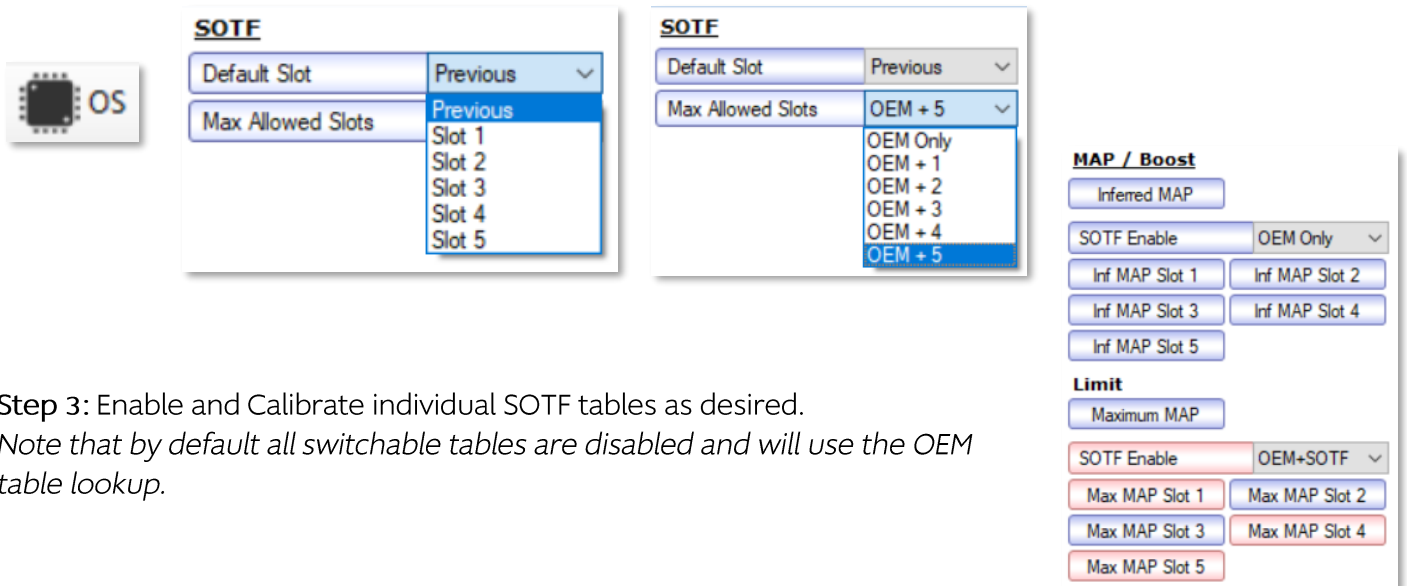
Please follow these simple instructions to configure the feature on your calibration and learn how to utilize the switching interface.

## Preparing the ECM

Step 1: Apply the OS SOTF code modification, save, close, and reload your HPT calibration.



Step 2: Configure SOTF feature settings\*.



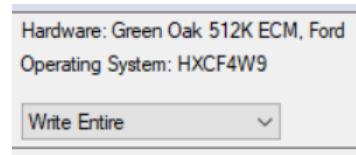
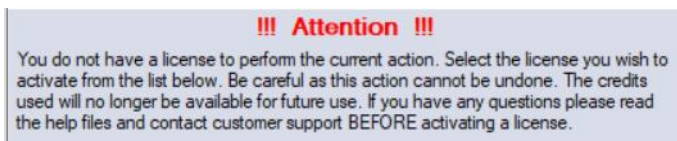
Step 3: Enable and Calibrate individual SOTF tables as desired.

Note that by default all switchable tables are disabled and will use the OEM table lookup.



Step 4: Flash the ECM using Write Entire.

Note that this OS modification requires licensing the original base operating system and the new custom SOTF operating system.



## Using Switch on the Fly

Step 1: Meet switching requirements

- Vehicle must be equipped with cruise control hardware and steering wheel.
- Vehicle must be On or Running, and Cruise Control must be deactivated.

Step 2: Activate the Switching Menu.

Action	Result
Press the Coast button	Tach displays <i>Active Slot (x1000)</i> for 3 seconds
Switching slots is now available for 10 seconds	

Step 3: Now that we're activated..

Action	Result
Press the <b>Resume</b> button	<i>Active Slot</i> increased by 1 Tach displays <i>Active Slot (x1000)</i> for 3 seconds
Press the <b>Set/Accel</b> button	<i>Active Slot</i> decreased by 1 Tach displays <i>Active Slot (x1000)</i> for 3 seconds
<i>Active Slot</i> will be limited to the <b>Max Allowed Slots</b> calibration setting	

Step 4: Deactivate the Switching Menu.

Action	Results
The switching menu will automatically deactivate after 10 seconds if no buttons are pressed	
Press the Coast button (display active)	Deactivates switching menu, restores tach
Press the Coast button (display inactive)	Tach displays <i>Active Slot (x1000)</i> for 3 seconds



## Frequently Asked Questions

**Q: Can I use this feature with an aftermarket steering wheel?**

A: Maybe. This feature requires the factory cruise control buttons to work properly.

**Q: I forgot what slot I'm currently in, how can I tell which slot is active?**

A: Use VCM Scanner to monitor the "Active Slot" parameter or press the "Coast" button.

**Q: I made a bunch of calibration changes, but nothing seems to change when I switch slots?**

A: Make sure that each set of SOTF tables has the SOTF Enable set to "OEM+SOTF".

**Q: I set my Default Slot to 4 but when I start the car it is Slot 0, what's going on?**

A: If the Default Slot is greater than the Max Allowed Slots it will default to Slot 0.

**Q: I shut off the car in Slot 3, and when I started it back up the Active Slot was 3! How did that happen?**

A: We thought it'd be cool if this feature remembered your previous slot and restored it for you on startup.

**Q: I've tried everything, I just can't get this to work! Can you tell me what I'm doing wrong?**

A: Yes! Contact us at <https://support.hptuners.com> to proceed with diagnosing the cause.

**Q: When I activate the switching menu, my torque converter unlocks. Is this normal behavior?**

A: Yes, unfortunately. This vehicle utilizes the same tachometer signal for some transmission tables, and thus may unlock the torque converter for ~3 seconds if you are switching maps while at speed.

**Q: Will this work in my (insert currently unsupported application here)?**

A: We will be adding more applications based on demand and availability!

\*Some operating systems have space constraints and may be limited in the number of available slots. See below for the currently supported operating systems and slot availability.

## Map Slots – Maximum Available

Not all OS's are natively supported and may require a dealer update in order to utilize SOTF features.

The following native OS's are currently supported:

[VXAP2](#), [VXBC9](#), [VXDB1](#), [VXCF9](#), [VXFB2](#), [VXGB4](#), [VXHB5](#)

### OEM + 1-Slot

- VXBB3, VXBB4, VXBB5, VXBB7, VXBB8, VXBB9, VXBC1, VXBC2, VXBC3, VXBC4, VXBC5, VXBC6, VXBC7, [VXBC9](#)

### OEM + 2 Slots

- VXAK6, VXAK7, VXAK8, VXAL0, VXAL1, VXAL2, VXAM0, VXAM2, VXAM6, VXAM7, VXAN0, VXAP1, [VXAP2](#)
- VXDA1, VXDA2, [VXDB1](#)

### OEM + 3 Slots

- VXHA2, VXHB0, VXHB2, VXHB3, VXHB4, [VXHB5](#)

### OEM + 4 Slots

- VXGA1, VXGA3, VXGB2, [VXGB4](#)

### OEM + 5 Slots

- VXCE5, VXCE7, VXCE8, VXCE9, VXCF0, VXCF1, VXCF2, VXCF4, VXCF5, VXCF7, [VXCF9](#)
- [VXFB2](#)